

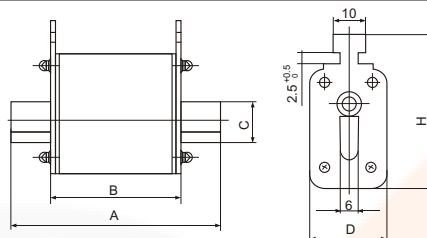
FUSE, FUSE LINK FUSE BASE, FUSE DISCONNECTOR



A602 - LOW VOLTAGE H.R.C FUSE LINKS

Table 1 continued

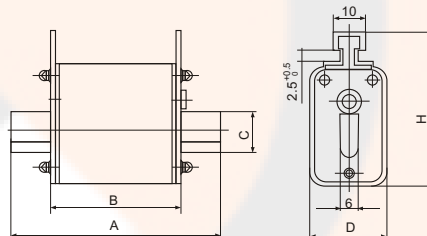
No.	Model of fuse link				Rated voltage (V)	Rated current (A)	Weight (g)	Drawing No.	Overall dimension (mm)				
	CROP products		Domestic and oversea similar products						A	B	C	D	H
	(gG) General	(aR) Quick speed	(gG) General	(aR) Quick speed									
62001	RT16-000	-	NT00C NH00C	-	500/690	4~100	150	1.1	78.5	49	15	21	52.5
62002	RO30A	RS30A	NH00C	-	500/690	4~100	123	1.1	78	49	15	21	48
62003	RO30B	RS30B	NH00C	-	500/690	4~100	117	1.1	78	49	15	21	48
62004	RO30C	RS30C	NH00C 3NA3	-	500/690	10~100	132	1.1	78	49	15	21	52.5



Drawing 1.1

Table 1 continued

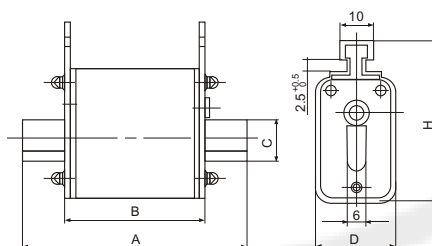
No.	Model of fuse link				Rated voltage (V)	Rated current (A)	Weight (g)	Drawing No.	Overall dimension (mm)				
	CROP products		Domestic and oversea similar products						A	B	C	D	H
	(gG) General	(aR) Quick speed	(gG) General	(aR) Quick speed									
62005	RT16-00	-	NT00 NH00	-	500/690	4~160	150	1.2	78	49	15	29	56.5
62006	RO31	RS31	RT20-00 3NA	HLS00	500/690	4~160	176.5	1.2	78	49	15	28	59
62007	RO31A	RS31A	NH00 PH00	-	500	10~160	178.5	1.2	78	49	15	30	53



Drawing 1.2

Table 1 continued

No.	Model of fuse link				Rated voltage (V)	Rated current (A)	Weight (g)	Drawing No.	Overall dimension (mm)				
	CROP products		Domestic and oversea similar products						A	B	C	D	H
	(gG) General	(aR) Quick speed	(gG) General	(aR) Quick speed									
62008	RT16-0	-	NT0 NH0	-	500/690	4~160	200	1.3	125	68	15	29	56.5
62009	RO31B	RS31B	RT20-0	3NE	500/1140	6~160	278	1.3	125	68	15	29	61.5



Drawing 1.3



FUSE, FUSE LINK FUSE BASE, FUSE DISCONNECTOR

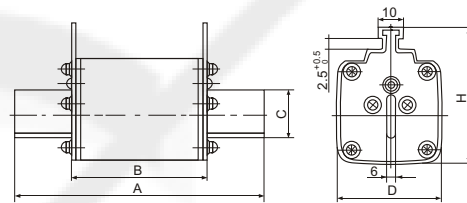


A602 - LOW VOLTAGE H.R.C FUSE LINKS



Table 1 continued

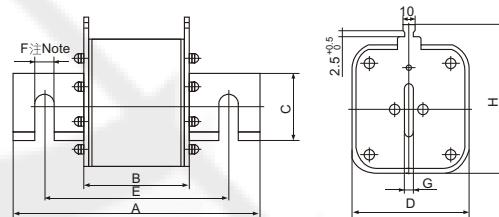
No.	Model of fuse link				Rated voltage (V)	Rated current (A)	Weight (g)	Drawing No.	Overall dimension (mm)				
	CROP products		Domestic and oversea similar products						A	B	C	D	H
	(gG) General	(aR) Quick speed	(gG) General	(aR) Quick speed									
62010	RT16-1	-	NT1 NH1	-	500/690	32-250	360	1.4	135	68	21	48	62
62011	RT16-2	-	NT2 NH2	-	500/690	80-400	650	1.4	150	68	27	58	72
62012	RT16-3	-	NT3 NH3	-	500/690	160-630	850	1.4	150	68	33	67	84.5
62013	RO31C	RS31C	3NA3 NH1	-	500	32-200	293.5	1.4	135	68	20	29	61.5
62014	RO32	RS32	NT1 NH1 3NA1	-	500/690	36-250	455	1.4	135	68	20	48	60
62015	RO32A	RS32A	-	-	1140	200	570	1.4	172	110	19.5	44	58
62016	RO32B	RS32B	NH1	-	500	250	393	1.4	135	68	20	40	68
62017	RO35	RS35	NH1	-	500	6-160	249	1.4	135	68	20	30	53
62018	RO36	RS36	NH1	-	500	32-200	356	1.4	135	68	20	40	59
62019	RO33	RS33	RT20-2 3NA1	-	500/690	80-400	650	1.4	150	68	25	58	70
62020	RO33B	RS33B	NH2	-	500	400	580	1.4	150	68	25	52	71
62021	RO34	RS34	RT20-3	3NC2-4	500/600	160-630	880	1.4	150	68	32	67	80
62022	RO39A	RS39A	NT4	-	380/500	500/1250	2140	1.4	200	90	50	97	113



Drawing 1.4

Table 1 continued

No.	Model of fuse link				Rated voltage (V)	Rated current (A)	Weight (g)	Drawing No.	Overall dimension (mm)							
	CROP products		Domestic and oversea similar products						A	B	C	D	E	F	G	H
	(gG) General	(aR) Quick speed	(gG) General	(aR) Quick speed												
62023	RO34K	RS34K	-	3NC8	500/660	150-630	810	1.5	140	68	68	70	108	10.5	6	85
62024	RO38	RS38	-	3NE3626	500	200-630	1050	1.5	160	86	86	70	126	11	6	81.5
62025	RO39	RS39	NT4 RT17	-	500	500-1250	2470	1.5	200	90	90	97	150	16.3	8	113
62026	RO39B	RS39B	NT4 RT17	-	500	500-1000	2100	1.5	200	79	79	87.5	150	17	8	114.5

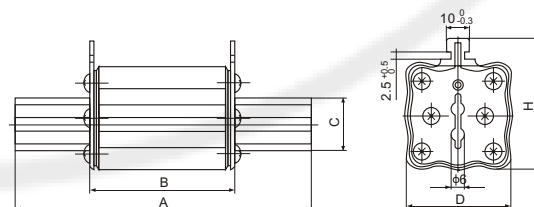
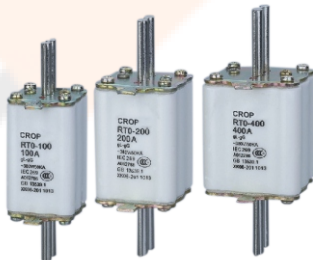


Drawing 1.5

Note: It is allowable to change the double-transverse type wiring hole into one-transverse one-straight or double-straight type structure

Table 1 continued

No.	Model of fuse link				Rated voltage (V)	Rated current (A)	Weight (g)	Drawing No.	Overall dimension (mm)				
	CROP products		Domestic and oversea similar products						A	B	C	D	H
	(gG) General	(aR) Quick speed	(gG) General	(aR) Quick speed									
62027	RT0-50	-	-	-	400	10-50	185	1.9	103	66	10.3	25	52
62028	RT0-100	-	-	-	400	20-100	320	1.9	125	67	18	40	52
62029	RT0-200	-	-	-	400	50-200	400	1.9	135	67	23	46	58
62030	RT0-400	-	-	-	400	160-400	585	1.9	145	67	30	55	66
62031	RT0-600	-	-	-	400	250-600	845	1.9	165	67	36	66	77



Drawing 1.9

FUSE, FUSE LINK FUSE BASE, FUSE DISCONNECTOR

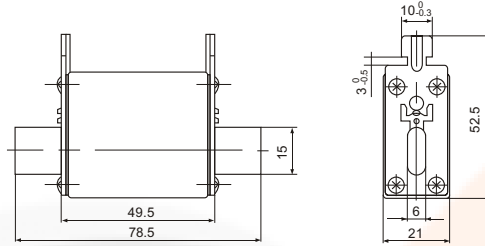


A602 - LOW VOLTAGE H.R.C FUSE LINKS

Table 1 continued



No.	Model of fuse link				Rated voltage (V)	Rated current (A)	Weight (g)	Drawing No.	Overall dimension (mm)
	CROP products		Domestic and oversea similar products						
	(gG) General	(aR) Quick speed	(gG) General	(aR) Quick speed					
62032	NH00C	-	-	-	500/660	4~100	132	1.11	Refer to drawing 1.11 for detailed data

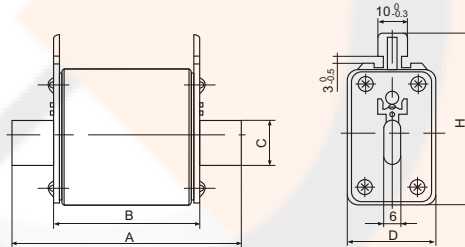


Drawing 1.11

Table 1 continued



No.	Model of fuse link				Rated voltage (V)	Rated current (A)	Weight (g)	Drawing No.	Overall dimension (mm)				
	CROP products		Domestic and oversea similar products										
	(gG) General	(aR) Quick speed	(gG) General	(aR) Quick speed					A	B	C	D	H
62033	NH00	RS31	-	-	500/660	10~160	180	1.12	78	50.5	15	30	60
62034	NH0	-	-	-	500/660	6~160	267	1.12	125	67	15	30	60

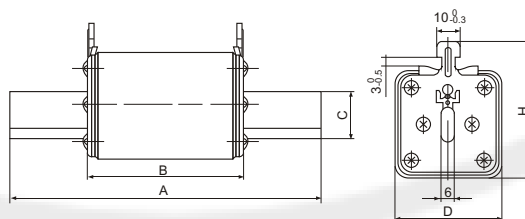


Drawing 1.12

Table 1 continued



No.	Model of fuse link				Rated voltage (V)	Rated current (A)	Weight (g)	Drawing No.	Overall dimension (mm)				
	CROP products		Domestic and oversea similar products										
	(gG) General	(aR) Quick speed	(gG) General	(aR) Quick speed					A	B	C	D	H
62035	NH1	RS32	-	-	500/660	32~250	447	1.13	135	67	20	46	58.5
62036	NH2	RS33	-	-	500/660	80~400	727	1.13	150	68	30	58.5	68.5
62037	NH3	RS34	-	-	500/660	160~630	975	1.13	150	68	36	70	82



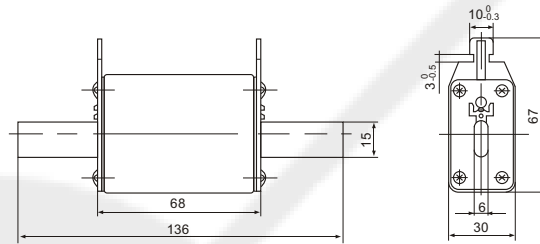
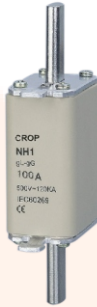
Drawing 1.13

This document is property of CROP Technology Group Ltd. It is not allowed to send, duplicate or edit this document without written permission of CROP

A602 - LOW VOLTAGE H.R.C FUSE LINKS

Table 1 continued

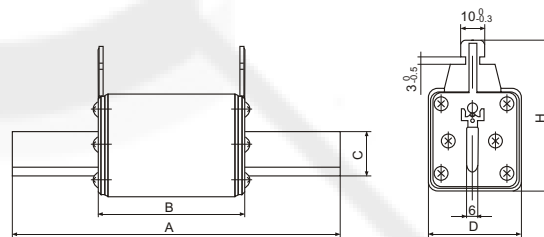
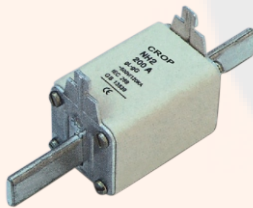
No.	Model of fuse link				Rated voltage (V)	Rated current (A)	Weight (g)	Drawing No.	Overall dimension (mm)				
	CROP products		Domestic and oversea similar products										
	(gG) General	(aR) Quick speed	(gG) General	(aR) Quick speed									
62038	NH1 (Small capacity)	-	-	-	500/660	16~160	300	1.14	Refer to drawing 1.14 for detailed data				



Drawing 1.14

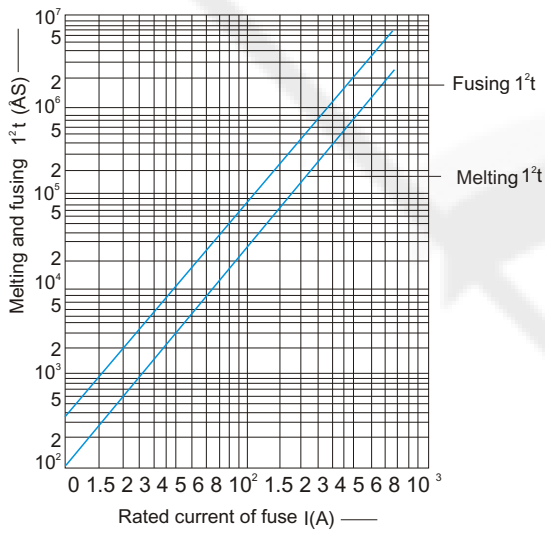
Table 1 continued

No.	Model of fuse link				Rated voltage (V)	Rated current (A)	Weight (g)	Drawing No.	Overall dimension (mm)				
	CROP products		Domestic and oversea similar products										
	(gG) General	(aR) Quick speed	(gG) General	(aR) Quick speed					A	B	C	D	H
62039	NH2 (Small capacity)	-	-	-	500/660	35~250	450	1.15	150	67	20	46	67
62040	NH3 (Small capacity)	-	-	-	500/660	200~400	727	1.15	151	67	30	58.5	81.5

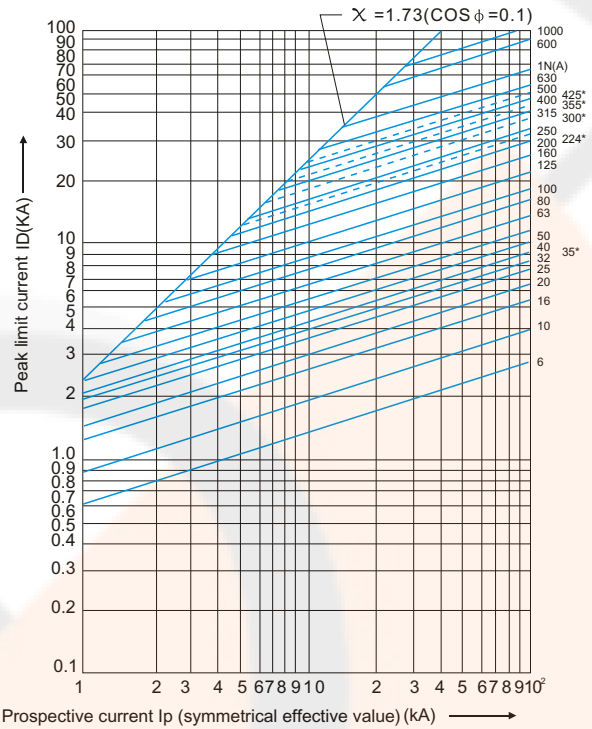


Drawing 1.15

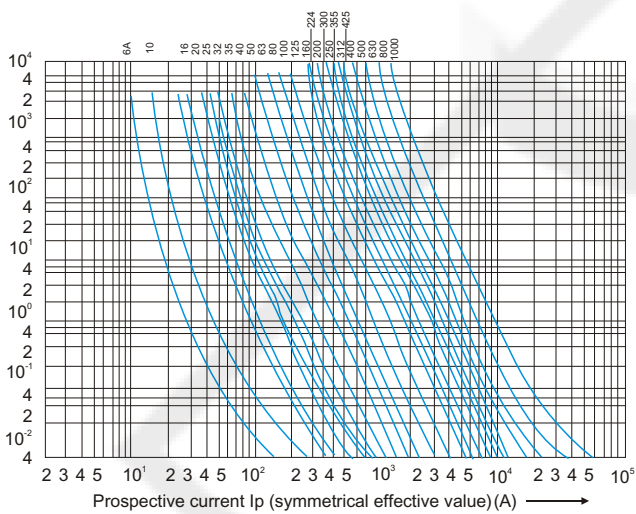
Characteristic curve



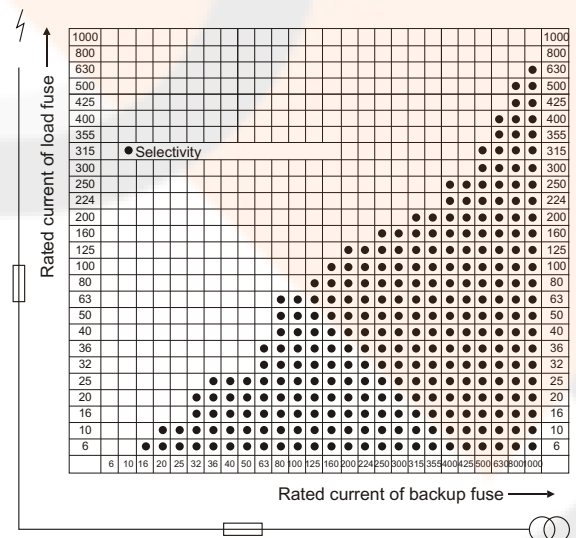
12t value of fuse at AC voltage 500V and current 100KA



Characteristic curve of limit current (*means nonstandard rated current)



RT16 type 6-1000A time-current characteristic curve



Interstage cooperation of fuses of various rated current levels

This document is property of CROP Technology Group Ltd. It is not allowed to send, duplicate or edit this document without written permission of CROP